

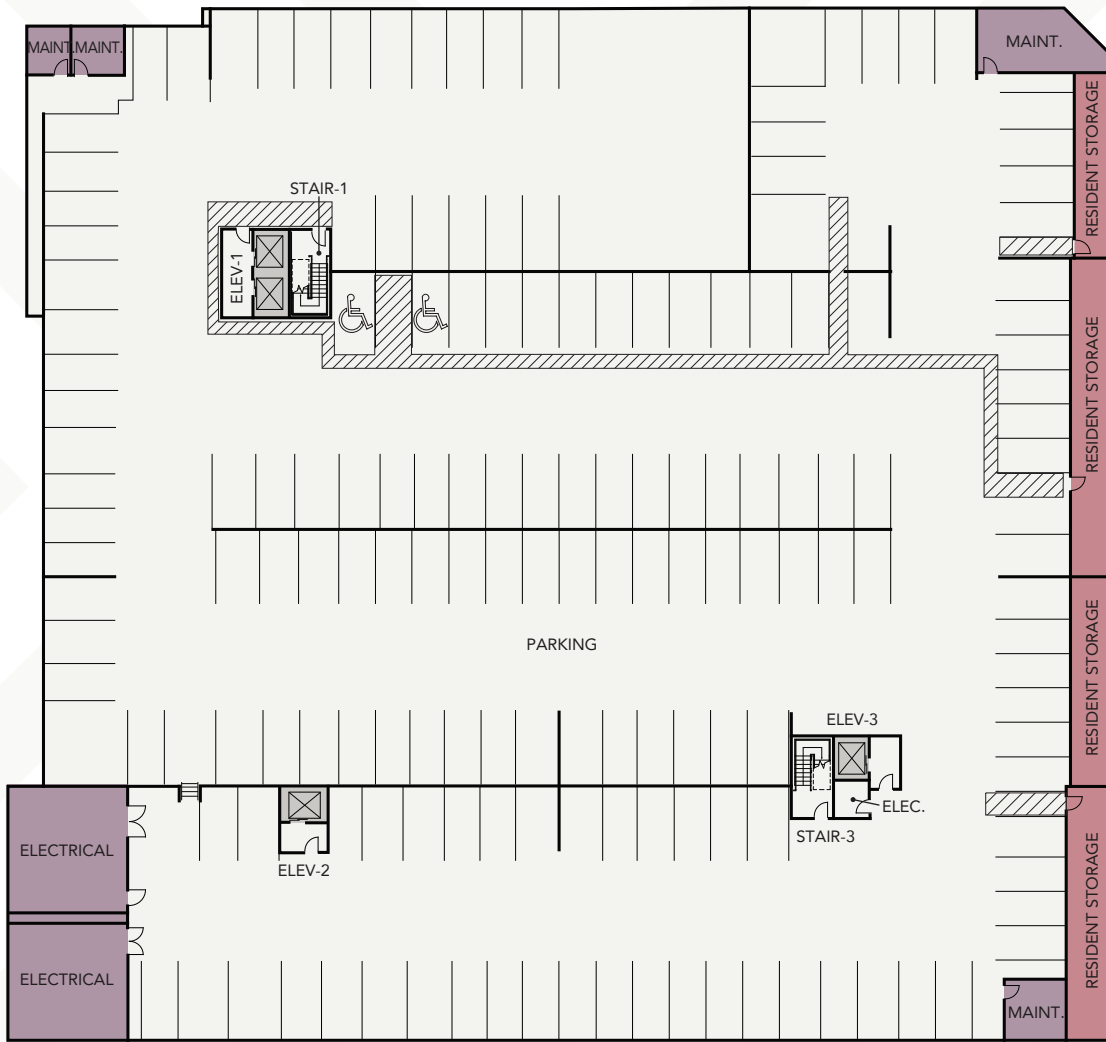
PARKING - P1 (LOWER LEVEL)



JAMES STREET

TERRY AVENUE

BOREN AVENUE



JEFFERSON STREET



520 TERRY AVENUE | SEATTLE, WA 98104 | 206.556.3657 | BROADSTONESAXTON.COM

YOUR SELECTED FLOOR PLAN MAY VARY FROM THIS ILLUSTRATION DUE TO DESIGN CONFIGURATION AND ARCHITECTURAL STYLING. NOT ALL FEATURES ARE AVAILABLE IN EVERY APARTMENT. ALL SQUARE FOOTAGES AND DIMENSIONS ARE APPROXIMATE.

